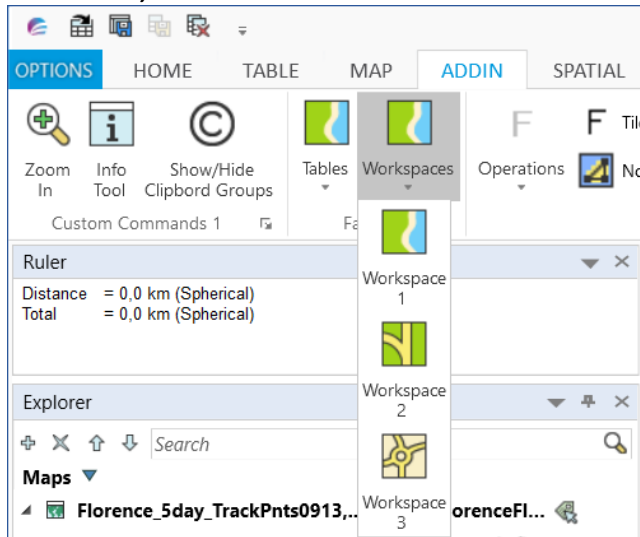


## StackPanel versus WrapPanel

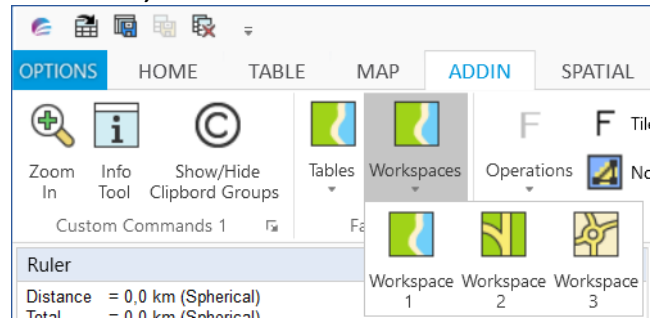
You can for example add panels to SplitButtons and DropDownButtons. Then you add your controls to these panels.

The main difference between the StackPanel and the WrapPanel is that that WrapPanel automatically can wrap the controls onto a new line, if the controls do not fit in the given size.

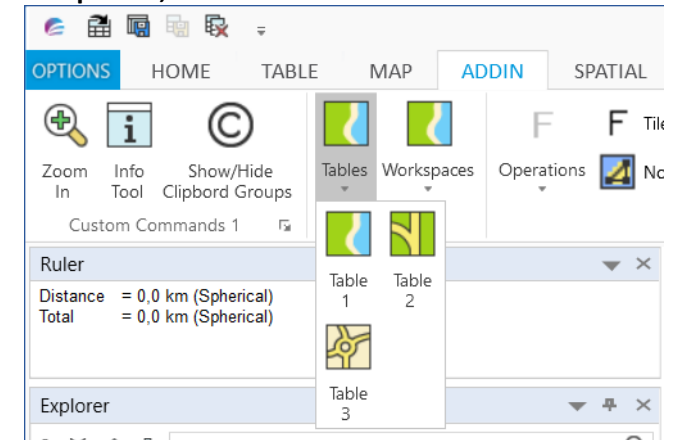
### StackPanel, vertical



### StackPanel, horizontal



### WrapPanel, horizontal



Below you can see the .NET code for a couple of samples. The differences are found in this few lines of code:

#### StackPanel:

```
//Adding DropDownButton Group 'Workspaces' as type StackPanel
var panelWorkspaces = dropdownWorkspaces.Controls.Add("panelWorkspaces", "", ControlType.StackPanel) as IStackPanel;
//Setting the orientation of the controls to be horizontal or Vertical
panelWorkspaces.Orientation = Orientation.Vertical;
```

#### WrapPanel:

```
//Adding DropDownButton Group 'Tables' as type WrapPanel
var panelTables = dropdownTables.Controls.Add("panelTables", "", ControlType.WrapPanel) as IWrapPanel;
//Setting the orientation of the controls to be horizontal
panelTables.Orientation = Orientation.Horizontal;
//The width determines how many controls there can be on each line
panelTables.Width = 80;
```

## StackPanel – Vertical

```
//Adding DropDownButton 'Workspaces'
var dropdownWorkspaces = grpFavorites.Controls.Add("dropDownWorkspaces", "Workspaces", ControlType.DropDownButton) as IRibbonDropDownControl;
dropdownWorkspaces.IsLarge = true;
dropdownWorkspaces.LargeIcon = PathToUri("pack://application:,,,/MapInfo.StyleResources;component/Images/Mapping/basemapAerial_32x32.png");
dropdownWorkspaces.SmallIcon = PathToUri("pack://application:,,,/MapInfo.StyleResources;component/Images/Mapping/basemapAerial_16x16.png");
dropdownWorkspaces.ToolTip = new MapInfoRibbonToolTip
{
    ToolTipDescription = "Favorite Workspaces",
    ToolTipText = "Open one of your favorite workspaces.",
};
dropdownWorkspaces.Enabled = true;

//Adding DropDownButton Group 'Workspaces' as type StackPanel
var panelWorkspaces = dropdownWorkspaces.Controls.Add("panelWorkspaces", "", ControlType.StackPanel) as IStackPanel;
//Setting the orientation of the controls to be horisontal or Vertical
panelWorkspaces.Orientation = Orientation.Vertical;

//Adding the controls to the panel
if (panelWorkspaces.Controls.Add("drbOpenWor1", "Workspace 1", ControlType.Button) is IRibbonButtonControl btnWorkspace1)
{
    btnWorkspace1.IsLarge = true;
    btnWorkspace1.LargeIcon = PathToUri("pack://application:,,,/MapInfo.StyleResources;component/Images/Mapping/basemapAerial_32x32.png");
    btnWorkspace1.SmallIcon = PathToUri("pack://application:,,,/MapInfo.StyleResources;component/Images/Mapping/basemapAerial_16x16.png");
    btnWorkspace1.Command = new DelegateCommand(OnOpenFavoriteClick).ViewToContractAdapter();
}

if (panelWorkspaces.Controls.Add("drbOpenWor2", "Workspace 2", ControlType.Button) is IRibbonButtonControl btnWorkspace2)
{
    btnWorkspace2.IsLarge = true;
    btnWorkspace2.LargeIcon = PathToUri("pack://application:,,,/MapInfo.StyleResources;component/Images/Mapping/basemapHybrid_32x32.png");
    btnWorkspace2.SmallIcon = PathToUri("pack://application:,,,/MapInfo.StyleResources;component/Images/Mapping/basemapHybrid_16x16.png");
    btnWorkspace2.Command = new DelegateCommand(OnOpenFavoriteClick).ViewToContractAdapter();
}

if (panelWorkspaces.Controls.Add("drbOpenWor3", "Workspace 3", ControlType.Button) is IRibbonButtonControl btnWorkspace3)
{
    btnWorkspace3.IsLarge = true;
    btnWorkspace3.LargeIcon = PathToUri("pack://application:,,,/MapInfo.StyleResources;component/Images/Mapping/basemapRoads_32x32.png");
    btnWorkspace3.SmallIcon = PathToUri("pack://application:,,,/MapInfo.StyleResources;component/Images/Mapping/basemapRoads_16x16.png");
    btnWorkspace3.Command = new DelegateCommand(OnOpenFavoriteClick).ViewToContractAdapter();
}
```

## StackPanel – Horizontal

```
//Adding DropDownButton 'Workspaces'
var dropdownWorkspaces = grpFavorites.Controls.Add("dropDownWorkspaces", "Workspaces", ControlType.DropDownButton) as IRibbonDropDownControl;
dropdownWorkspaces.IsLarge = true;
dropdownWorkspaces.LargeIcon = PathToUri("pack://application:,,,/MapInfo.StyleResources;component/Images/Mapping/basemapAerial_32x32.png");
dropdownWorkspaces.SmallIcon = PathToUri("pack://application:,,,/MapInfo.StyleResources;component/Images/Mapping/basemapAerial_16x16.png");
dropdownWorkspaces.ToolTip = new MapInfoRibbonToolTip
{
    ToolTipDescription = "Favorite Workspaces",
    ToolTipText = "Open one of your favorite workspaces."
};
dropdownWorkspaces.Enabled = true;

//Adding DropDownButton Group 'Workspaces' as type StackPanel
var panelWorkspaces = dropdownWorkspaces.Controls.Add("panelWorkspaces", "", ControlType.StackPanel) as IStackPanel;
//Setting the orientation of the controls to be horizontal or Vertical
panelWorkspaces.Orientation = Orientation.Horizontal;

//Adding the controls to the panel
if (panelWorkspaces.Controls.Add("drbOpenWor1", "Workspace 1", ControlType.Button) is IRibbonButtonControl btnWorkspace1)
{
    btnWorkspace1.IsLarge = true;
    btnWorkspace1.LargeIcon = PathToUri("pack://application:,,,/MapInfo.StyleResources;component/Images/Mapping/basemapAerial_32x32.png");
    btnWorkspace1.SmallIcon = PathToUri("pack://application:,,,/MapInfo.StyleResources;component/Images/Mapping/basemapAerial_16x16.png");
    btnWorkspace1.Command = new DelegateCommand(OnOpenFavoriteClick).ViewToContractAdapter();
}

if (panelWorkspaces.Controls.Add("drbOpenWor2", "Workspace 2", ControlType.Button) is IRibbonButtonControl btnWorkspace2)
{
    btnWorkspace2.IsLarge = true;
    btnWorkspace2.LargeIcon = PathToUri("pack://application:,,,/MapInfo.StyleResources;component/Images/Mapping/basemapHybrid_32x32.png");
    btnWorkspace2.SmallIcon = PathToUri("pack://application:,,,/MapInfo.StyleResources;component/Images/Mapping/basemapHybrid_16x16.png");
    btnWorkspace2.Command = new DelegateCommand(OnOpenFavoriteClick).ViewToContractAdapter();
}

if (panelWorkspaces.Controls.Add("drbOpenWor3", "Workspace 3", ControlType.Button) is IRibbonButtonControl btnWorkspace3)
{
    btnWorkspace3.IsLarge = true;
    btnWorkspace3.LargeIcon = PathToUri("pack://application:,,,/MapInfo.StyleResources;component/Images/Mapping/basemapRoads_32x32.png");
    btnWorkspace3.SmallIcon = PathToUri("pack://application:,,,/MapInfo.StyleResources;component/Images/Mapping/basemapRoads_16x16.png");
    btnWorkspace3.Command = new DelegateCommand(OnOpenFavoriteClick).ViewToContractAdapter();
}
```

## WrapPanel – Horizontal

```
//Adding Tab Group 'Favorite Tables'
var grpFavorites = customTab.Groups.Add("grpFavorites", "Favorites");
grpFavorites.IsLauncherVisible = false;
//Adding DropDownButton 'Operations'
var dropdownTables = grpFavorites.Controls.Add("dropdownTables", "Tables", ControlType.DropDownButton) as IRibbonDropDownControl;
dropdownTables.IsLarge = true;
dropdownTables.LargeIcon = PathToUri("pack://application:,,,/MapInfo.StyleResources;component/Images/Mapping/basemapAerial_32x32.png");
dropdownTables.SmallIcon = PathToUri("pack://application:,,,/MapInfo.StyleResources;component/Images/Mapping/basemapAerial_16x16.png");
dropdownTables.ToolTip = new MapInfoRibbonToolTip
{
    ToolTipDescription = "Favorite Tables",
    ToolTipText = "Open one of your favorite tables.",
};
dropdownTables.Enabled = true;

//Adding DropDownButton Group Tables' as type WrapPanel
var panelTables = dropdownTables.Controls.Add("panelTables", "", ControlType.WrapPanel) as IWrapPanel;
//Setting the orientation of the controls to be horizontal
panelTables.Orientation = Orientation.Horizontal;
//The width determines how many controls there can be on each line
panelTables.Width = 80;

//Adding the controls to the panel
if (panelTables.Controls.Add("drbOpenTable1", "Table 1", ControlType.Button) is IRibbonButtonControl btnTable1)
{
    btnTable1.IsLarge = true;
    btnTable1.LargeIcon = PathToUri("pack://application:,,,/MapInfo.StyleResources;component/Images/Mapping/basemapAerial_32x32.png");
    btnTable1.SmallIcon = PathToUri("pack://application:,,,/MapInfo.StyleResources;component/Images/Mapping/basemapAerial_16x16.png");
    btnTable1.Command = new DelegateCommand(OnOpenFavoriteClick).ViewToContractAdapter();
    btnTable1.ToolTip = new MapInfoRibbonToolTip
}

if (panelTables.Controls.Add("drbOpenTable2", "Table 2", ControlType.Button) is IRibbonButtonControl btnTable2)
{
    btnTable2.IsLarge = true;
    btnTable2.LargeIcon = PathToUri("pack://application:,,,/MapInfo.StyleResources;component/Images/Mapping/basemapHybrid_32x32.png");
    btnTable2.SmallIcon = PathToUri("pack://application:,,,/MapInfo.StyleResources;component/Images/Mapping/basemapHybrid_16x16.png");
    btnTable2.Command = new DelegateCommand(OnOpenFavoriteClick).ViewToContractAdapter();
    btnTable2.ToolTip = new MapInfoRibbonToolTip
}

if (panelTables.Controls.Add("drbOpenTable3", "Table 3", ControlType.Button) is IRibbonButtonControl btnTable3)
{
    btnTable3.IsLarge = true;
    btnTable3.LargeIcon = PathToUri("pack://application:,,,/MapInfo.StyleResources;component/Images/Mapping/basemapRoads_32x32.png");
    btnTable3.SmallIcon = PathToUri("pack://application:,,,/MapInfo.StyleResources;component/Images/Mapping/basemapRoads_16x16.png");
    btnTable3.Command = new DelegateCommand(OnOpenFavoriteClick).ViewToContractAdapter();
    btnTable3.ToolTip = new MapInfoRibbonToolTip
}
```